

Technical Service Bulletin

Date: 9/29/2003

Product Description: BMK 12, 13, 15, 16 & 17 Bypass Systems

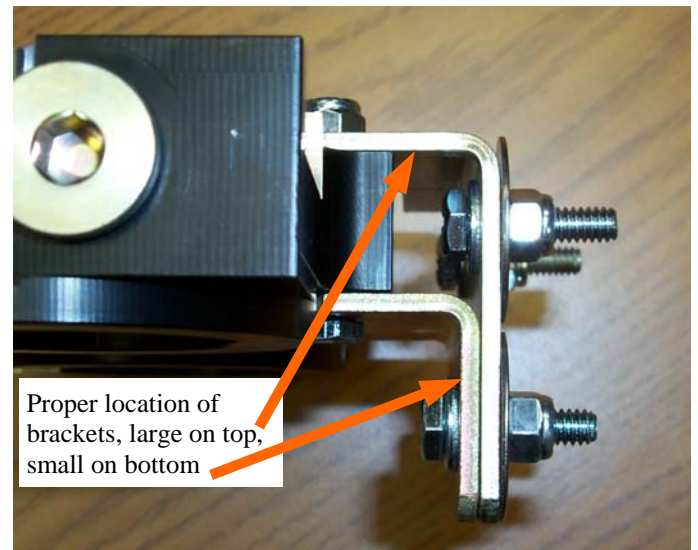
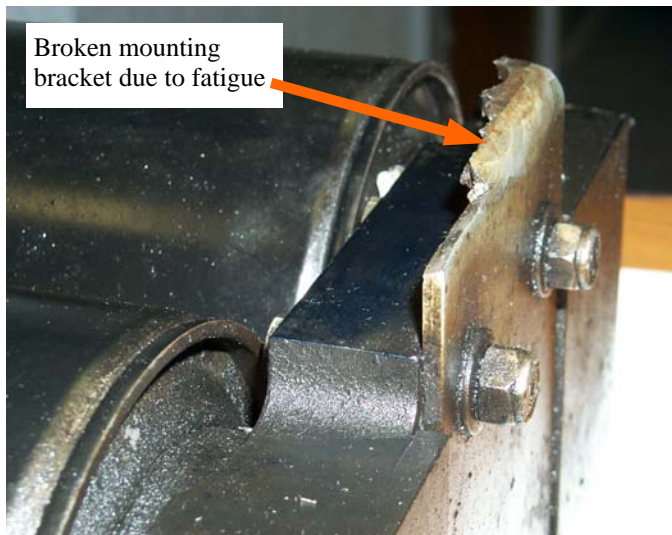
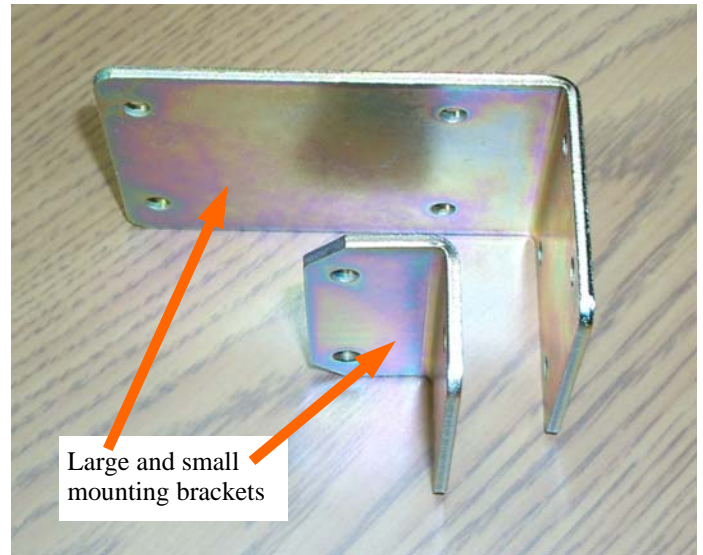
Subject: Mounting bracket installation procedures (BP194 & BP195)

DESCRIPTION:

When installing a BMK 12, 13, 15, 16, and 17 filtration kit, it is important that both of the included mounting brackets (BP194 & BP195) be used. Together, the brackets provide the support required to retain the mount in even the worst of conditions. It has come to our attention that some people are using only the larger bracket and leaving out the smaller one. This unfortunately, will result in a critical situation.

The larger bracket is not designed to carry the full weight of the mount. If used alone the bracket will fatigue over time and eventually break. Only when both brackets are used together will adequate support be afforded.

Should you be aware of an installation in which both brackets were not used, we strongly suggest the second be added. As this is a matter of improper installation and not of material or workmanship, failures of this nature will not be provided warranty consideration.



Submitted By: DRA Approved By: DRA Approval Date: 9/30/2003

Distribution: ___ Internal X All

Page 1 of 1